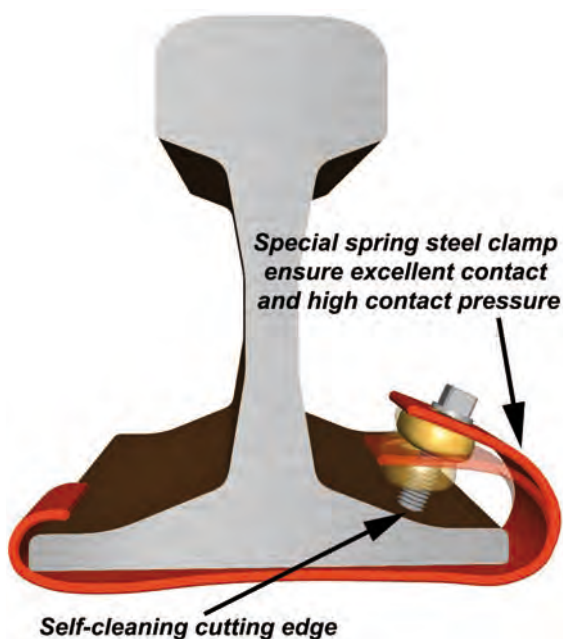


MM-036-06



Maintenance-free Rail Contact Bond



No need for:
Heavy sledgehammer!
Maintenance!

- Special spring steel clamp ensure excellent contact.
- No maintenance required!
- No filing of the contact surfaces etc.
- No cleaning of the rail.
- Excellent performance in cold climates
- Easily fitted with just a spanner.
- Large contact surface on contact screw.
- Can be reused year after year.
- One size fits several rail profiles.



SafeGrip™ – Maintenance-free Rail Contact Bond.

The contact screw force the special spring steel to arises and ensure optimum contact. Only a simple spanner is needed to ensure contact!

This type of rail bond is used as a temporary or stationary connection of cables to the rail. It can also be used as a temporary connection between two tracks while rails are being changed.

Safetracks unique Rail Contact Bonds are used also as a Track Circuit Operating Device, **T-COD**. **UK Network Rail approved**. Over 50 years of excellent performance.

SAFETRACK BAAVHAMMAR AB

Möllebergavägen 339-24, 245 93 Staffanstorps, Sweden

Tel. +46 (0)40 44 53 00

www.safetrack.se sales@safetrack.se

Individual Cable Connector without cable

MM-036-06



Type A



Type B



Type C

SAFE No.	For cable size (mm ²)	Connection to cable	Foot width (mm)	Fits ~rail size	Color	Type	Note
7019	up to 50 mm ²	M8	120-140	50 kg	Red	A	Cable on R side
7078	up to 50 mm ²	M8	139,5-150	UIC 60	Yellow	A	Cable on R side
707805	up to 50 mm ²	M8	125-150	50-60 kg	Yellow	A	Cable on R side
707807	up to 50 mm ²	M8	125-150	50-60 kg	Yellow	A	(Lockable) (use w. 7012)
701919	up to 50 mm ²	M12	120-140	50 kg	Red	A	Cable on R side
707806	up to 50 mm ²	M12	125-150	50-60 kg	Yellow	A	Cable on R side
707807	up to 50 mm ²	M8	125-150	50-60 kg	Yellow	A	(Lockable) (use w. 7012)
7003	up to 150 mm ²	Stripped bare wire	120-140	50 kg	Red	B	Cable on R side
7004	up to 150 mm ²	Stripped bare wire	139,5-150	UIC 60	Yellow	B	Cable on R side
70040002	up to 150 mm ²	M12	125-150	50-60 kg	Yellow	C	Cable on R side
70040004	up to 150 mm ²	M12	125-150	50-60 kg	Yellow	C	Cable on L side

Rail Bond with cable

SAFE No.	Sq. Area (mm ²)	Length (mm)	Foot width (mm)	Fits ~rail size	Color
7135	25	1560	100-125	35 kg	Yellow
7082	25	1560	120-140	50 kg	Red
708686	25	1560	125-150	50-60 kg	Yellow
7086	25	1560	139,5-150	UIC 60	Yellow
7230	25	3000	125-150	50-60 kg	Yellow
7240	50	1000	125-150	50-60 kg	Yellow
7242	50	1200	125-150	50-60 kg	Yellow
7241	50	1400	125-150	50-60 kg	Yellow
7246	50	1600	125-150	50-60 kg	Yellow
7245	50	1700	125-150	50-60 kg	Yellow
7265*	50	1650		Bullhead	TCOD/Red
7239*	50	1650	125-150	50-60 kg	TCOD/Yellow
7238*	50	1930	125-150	50-60 kg	TCOD/Yellow
70752	50	20 000	125-150	50-60 kg	Yellow
7257	95	1000	125-150	50-60 kg	Yellow
7260	95	1600	125-150	50-60 kg	Yellow
Other lengths available upon request.					
*) TCOD Delivered with locking bolt as standard. Locking key, SAFE 7012 not included.					
7008	Bag with velcro strap for temporary bonds and TCOD				
7012	Wrench/key for TCOD, L=125mm				



TCOD Key
SAFE 7012



Bag SAFE 7008