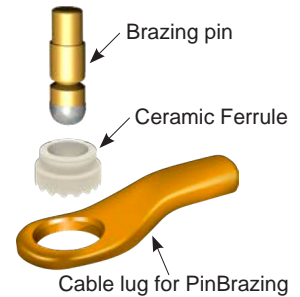


S300 Electronic PinBrazing Unit. Pat.

MM-107-04



- Unlimited capacity
- Fast, 2 sec braze time
- Constant Energy (Patent)
- S15 Automatic Brazing Gun (patent)
- Easy to use
- Safe for the operator
- Requires welding inverter RW674010
- No waste of brazing pins



The S300 PinBrazing unit is used when you need the absolute highest capacity and when battery operation is not necessary. The equipment is designed to be used with welding machines (not included) with an open circuit voltage of max. appr. 80V and welding current of 250-300A.

S15 Automatic brazing gun for uniform and safe result, every time. Not depending on the operators skill.

Used with brazing pins without fuse wire.



S300, SAFE 9380 includes:

Brazing gun S15 Automatic	SAFE 91030
Pinholder 8-9,5mm	SAFE 9211
Ringholder 8-9,5mm	SAFE 9202
Switchable ground magnet 600A	SAFE 80732
3m welding cables (connects to welding inverter)	

Add grinding machine (not included):

Grinding machine, cordless (230V)	SAFE 573070
Grinding machine, cordless (115V)	SAFE 573071

Add welding inverter (not included):

Welding inverter 3 Phase	SAFE RW674010
--------------------------	---------------



Technical Specification

Input current	30A
Rated output	400A/36V/35%
Weight	37kg/81,6Lb
Dimensions LxWxH (mm)	632x301x455

Technical Specification

Voltage	230/115V
Number of brazes per charge	Unlimited
Weight	6,5kg/14,3Lb
Dimensions LxWxH (mm)	300x200x172

Accessories

Ground Grip	SAFE 8071
Grinding wheel, silicon free	SAFE 8025
Carbide burr, type C	SAFE 8014
Carbide burr, type C extended	SAFE 8014XL
Grinding machine, cordless	SAFE 573070
Pin holder 8-9,5 (A)	SAFE 9211
Pin holder M8 (B)	SAFE 9213
Pin holder M10 (C)	SAFE 9215
Pin holder M12 (D)	SAFE 9217
Ring holder 8-9,5 mm	SAFE 9202
Ring holder M8/M10/M12	SAFE 9204
Extension set for 8-9,5 mm	SAFE 9227
Extension set threaded pins	SAFE 9229

SAFETRACK Baavhammar AB

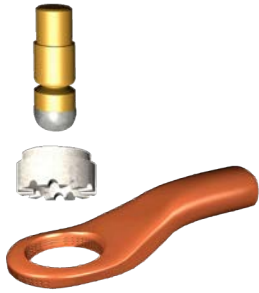
Möllebergavägen 339-24, 245 93 Staffanstorp, Sweden

Tel. +46 (0)40 44 53 00

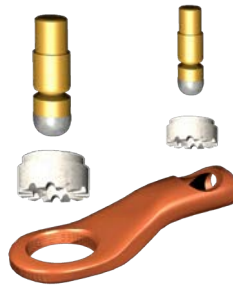
www.safetrack.se sales@safetrack.se

PinBrazing Consumables samples

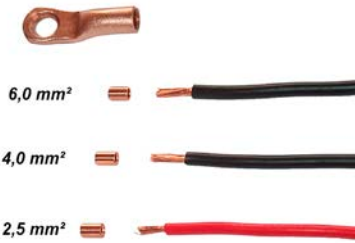
Full assortment at www.safetrack.se



Cable lugs



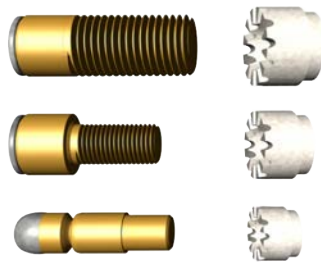
110-120 mm² Cable lug



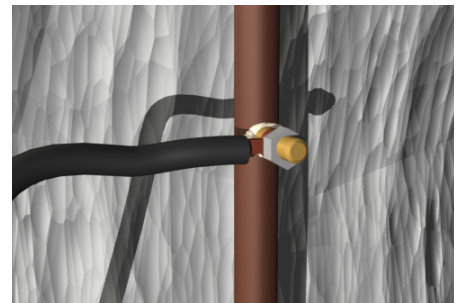
Terminal sleeves for small cables



Connectors/RailBonds



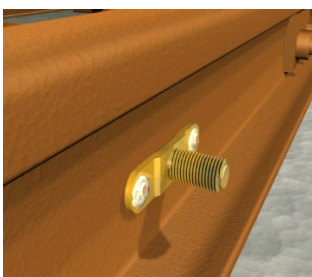
Brazing Pins



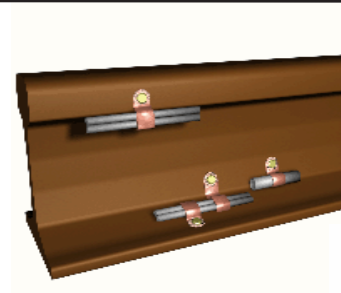
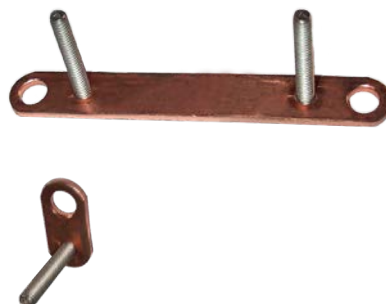
SnakeBite®, pinbrazing without cable lug



Pinbrazed cable connections



T-Connectors



Cable Clips

