

panoramaxx
Maximize your horizon.

optrel[®]
swiss made 



Shade Level
2.5
World Record!



Automatically better welding



SO WIDE. SO LIGHT. SO TRUE COLOR.

You've never seen welding this way before.

OUR BEST INNOVATIONS IN ONE HELMET.

optrel presents the most innovative and ergonomically optimal helmet to date, expanding the welder's field of vision without compromising on comfort. The unique nose cut-out floats above the nose to position the auto-darkening display closer to the eyes. This enlarges the field of vision 6 times compared to conventional welding masks, without adding extra weight.

The panorama view – in combination with the 2.5 shade at light-state and the optrel True Color optics – opens an entirely new visual dimension to the welding experience.

The **panoramaxx** features optrel's patented Autopilot function. Our unique 5-sensor array measures the brightness of the welding arc and automatically adjusts to the correct shade level.

The **panoramaxx** also marks the launch of optrel's unique new power system. Featuring a lithium-polymer power pack in combination with high-performance solar cells and an external USB charging option, the **panoramaxx** is the energy-independent, maintenance-free choice for professional welders.

The **panoramaxx** combines optrel's groundbreaking innovations with an unprecedented panorama view – making it the most advanced welding helmet of its time.

To match the optrel **panoramaxx** field of vision, a typical rectangular auto-darkening filter would need to be as large as this 180 x 120 mm panel!

MAXXIMIZE YOUR HORIZON.
WITH OPTREL'S PANORAMAXX.



PANORAMA FIELD OF VISION
The **panoramaxx** offers a 6 times larger field of vision than standard welding helmets – and is still a lightweight at only 550 g.



Comparing fields of view: standard ADF vs. optrel panoramaxx

WELCOME TO A NEW DIMENSION OF VIEWING. IN ALL PROCESSES.



AUTOPILOT

Detection of the arc brightness and fully automated shade level adjustment from 5 to 12.

* If preferred, the Autopilot can be deactivated for manual shade level selection.

Light
state

inactive
mode

Autopilot range

for all important work sequences

Adjusts automatically to the changing light conditions of the current welding method. Automatic adjustment up to shade level 12!

Shade level



2.5



5



6



7



8



9



10



11

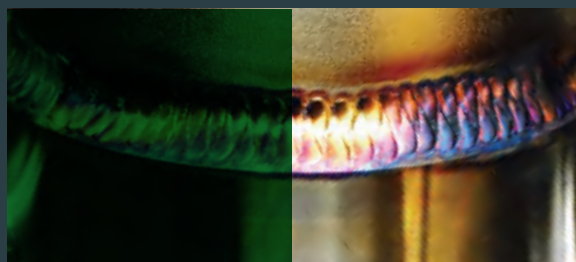


12



TRUE COLOR

A specially developed UV/IR filter allows the realistic color perception typical of optrel, bringing color to the welder's world.



Shade Level
2.5

LIGHT STATE 2.5

The much brighter view of your working environment in light state increases both safety and efficiency in the workplace.



STATE-OF-THE-ART POWER TECHNOLOGY

With its rechargeable power-pack, changing batteries is no longer necessary.



MULTI SENSOR DETECTION

The completely redesigned controls of the 5-sensor array ensure the perfect regulation of the auto-darkening filter.





panorama

You will see better:

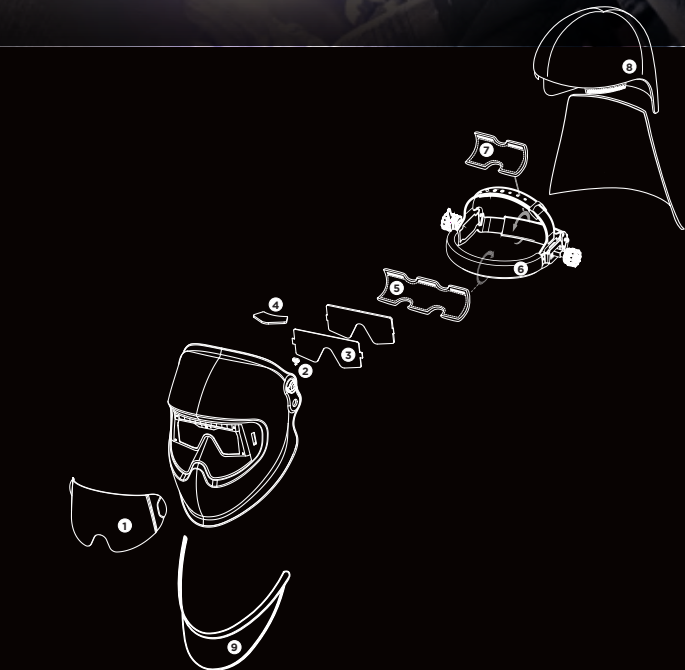
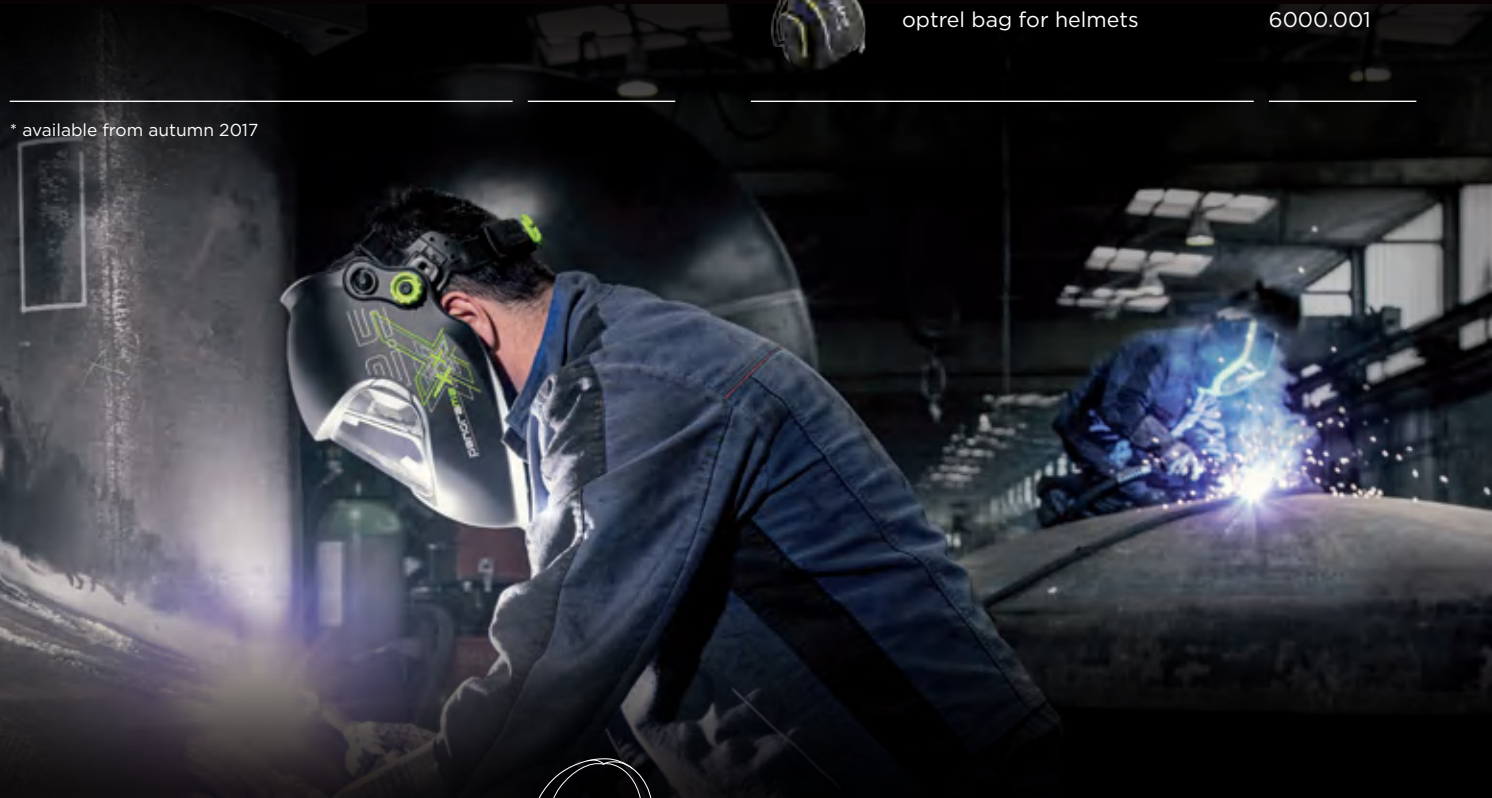
- during setup
- during welding
- during seam inspection
- during grinding
- during stitching

Better vision improves your safety, comfort and efficiency in the workplace.




Helmet system	Item no.
---------------	----------

 panoramaxx welding helmet black	1010.000
 panoramaxx PAPR helmet* black	4441.660

* available from autumn 2017



Main accessories	Item no.
------------------	----------

 optrel parking buddy	5002.900
 Front cover lens (5 pcs.)	5000.270
 Nose guard pad (2 pcs.)	5003.600
 Adjustable headband	5003.263
 optrel bag for helmets	6000.001

Spare parts and accessories	Item no.
-----------------------------	----------

1 Front cover lens (5 pcs.)	5000.270
2 Cover for Micro USB connection (2 pcs.)	5003.520
3 Inside cover lens (5 pcs.)	5000.010
4 Nose guard pad (2 pcs.)	5003.600
5 Cotton sweatband (2 pcs.)	5004.073
6 Adjustable headband (including sweatband and comfortband)	5003.263
7 Comfortband (2 pcs.)	5004.020
8a Head and neck protector, leather	4028.016
8b Head and neck protector PAPR, leather	4028.031
9 Breast protector, leather	4028.015

THE HIGH-TECH WELDING MASK. SWISS MADE.

TECHNICAL DATA

Description	Fully automated welding mask with extra-large field of vision: the nose cut-out floats above the nose to position the auto-darkening filter closer to the welder's eyes. True-Color filter protects at shade levels 2.5/5-12M with Autopilot (automatic shade selection), +/- 2 individual shade-preference adjustment, sensitivity control and opening delay with optional twilight function.		
Shade levels	inactive: shade level 2,5 active, manual: shade level 7-12	EN379 classification	Optical class: 1 Scattered light: 1 Homogeneity: 1 Angular dependence: 2
Autopilot	Automatic protection level regulation across a range from 5-12 with individual calibration option of ± 2	Shape stability	Welding mask: up to 220 °C / 428 °F Front cover lens: up to 137 °C / 279 °F
Power supply	Solar cells, lithium-polymer battery, rechargeable by USB-cable	Eye protection	Ultraviolet / Infrared Protection: maximum protection at any shade level
Battery life	300 to 500 charging cycles	Operating temperature	-10°C to + 70°C / 14°F to 158°F
Sensors	Five Sensors	Storage temperature	-20°C to + 80°C / -4°F to 176°F
Sensitivity	Infinitely adjustable, now with "super high" sensitivity	Weight	550 g / 19,4 oz
Switching time	bright to dark: 0.090 ms at room temperature 0.070 ms at 55°C dark to bright: 0.1 s to 2.0 s (with twilight function)	Application ranges	Any electric arc welding process Electrode Welding (Stick Welding, SMAW) / MIG / MAG (GMAW) / GMAW High melting rate process / Flux Cored Wire Welding / TIG welding (GTAW) / Plasma Arc Welding / Plasmacutting & Oxy-gas Welding / Grinding in Grind Mode <i>Prohibited for laser welding!</i>
Field of vision	Depending on headband setting, 2.3x to 6.3x field of vision of a 100 x 50 mm standard industry ADF	Scope of delivery	Welding helmet, manual, storage bag, Micro USB cable, warranty card and one front cover lens
		Standards	CE, ANSI Z87.1 (ADF and helmet shell), EAC, complies with CSA Z94.3
		Warranty	2 years 1 year warranty extension (except batteries) for online product registration within the first 6 months. http://register.optrel.com

Your optrel Reseller:



optrel AG
industriestrasse 2
CH-9630 wattwil
switzerland
www.optrel.com
info@optrel.com

optrel.com

